

Style 1202 “Flexi-Spool” Double-Arch Expansion Joints



Style 1202 “Flexi-Spool” Double-Arch rubber expansion joints are designed to provide greater movement capabilities than a single arch product can provide. **Style 1202 “Flexi-Spool”** expansion joints have two arches, each of which is roughly equal in movement capabilities to the single arch that is built into our Style 1201 expansion joints.

In comparison to our single arch Style 1201, **Style 1202** expansion joints have approximately twice the movement ratings—twice the axial compression, axial elongation, lateral offset, and angular rotation. A high-pressure reinforcing and special arch configuration allows for high working pressures and vacuum ratings. A thick, wrapped-on rubber cover protects the reinforcing from damage and the environment. Full-face duck and rubber flanges provide an optimum sealing surface. Both tube and cover can be provided in a variety of elastomers to handle chemicals, moderate temperatures extremes, abrasion, or other conditions. Materials include Neoprene, Chlorobutyl, EPDM, Nitrile, natural rubber, Hypalon, and Viton. For applications where components are needed to convey drinking water or other food products, special FDA elastomer tubes and covers can be constructed. Open-arch is standard and filled-arch (designation FA) is available upon request.

Style 1202 Double-Arch “Flexi-Spool” expansion joints can also be constructed in special face-to-face lengths. For greater motion requirements, Style 1203 Triple Arch, or Style 1204 4-Arch can be offered.

“Flexi-Spool” expansion joints are ideal for many demanding industrial applications such as water & waste treatment, power generation, pulp & paper, chemical handling, mine processing, and marine. Spool type expansion joints should always be installed using split steel retaining rings. Control units are always required in unanchored piping systems and are recommended in all other pressure applications as a back-up safety device in the event of anchor failure.

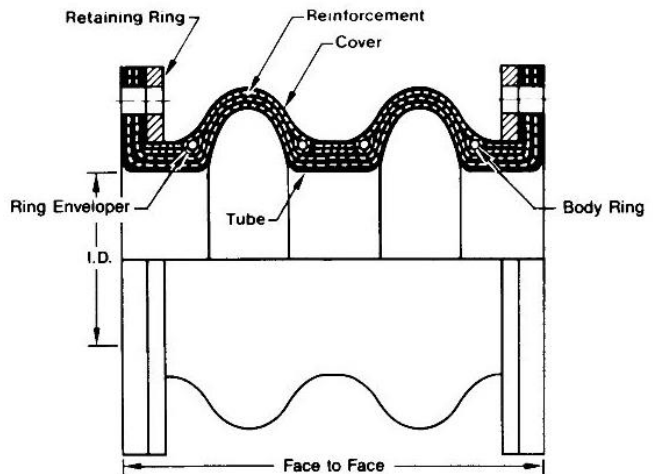
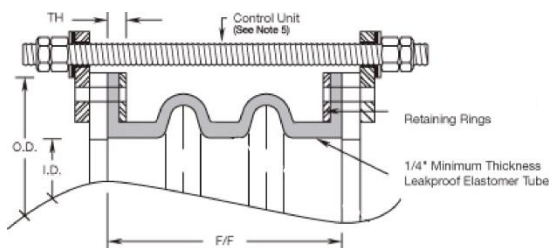
Materials & Temperatures:

Style Number	Cover Elastomer	Tube Elastomer	Max. Operating Temp
1202EE	EPDM	EPDM	250°F (121°C) ¹
1202BB	Chlorobutyl	Chlorobutyl	250°F (121°C) ¹
1202NN	Neoprene	Neoprene	225°F (107°C)
1202NP	Neoprene	Nitrile	212°F (100°C)
1202NR	Neoprene	Natural Rubber	180°F (82°C)
1202VN	Neoprene	Viton	225°F (107°C)
1202VV	Viton	Viton	250°F (121°C) ²
1202FD	EPDM	FDA Black EPDM	250°F (121°C)
1202FW	White FDA EPDM	White FDA EPDM	250°F (121°C)

1) Rated 300°F (149°C) for blower service.

2) Viton tube and cover with Kevlar reinforcing is rated for 400°F (205°C).

Style 1202 "Flexi-Spool" Double-Arch Expansion Joint



STYLE 1202 DOUBLE ARCH – SIZES, MOVEMENTS, PRESSURE RATINGS, WEIGHTS

Size (I.D.) (In.)	F/F (In.)	Allowable Movements From Neutral Face-to-Face (In.)				Effective Area (Sq. In.)	Pressure Ratings		Weights		
		Axial Comp	Axial Ext	Lateral Deflection	Angular Rotation		Positive (PSIG)	Vacuum ⁶ (in. Hg.)	Exp Jt.	Ret Rings	Control Rods ⁴
1-1/2	10	3.5	1.75	2.0	78 Deg	7.4	220	15	11	3	6
2	10	3.5	1.75	2.0	78 Deg	12.4	220	15	12	4	7
2-1/2	10	3.5	1.75	2.0	66 Deg	15.7	220	15	14	5.6	7
3	10	3.5	1.75	2.0	56 Deg	19.4	220	15	17	6	7
4	10	3.5	1.75	2.0	44 Deg	27.9	220	15	21	7.5	8
5	10	3.5	1.75	2.0	36 Deg	38.1	220	15	24	8	8
6	10	3.5	1.75	2.0	30 Deg	49.9	220	15	29	9	9
8	10	3.5	1.75	2.0	24 Deg	78.0	220	15	42	12	16
10	12	4.0	2.00	2.25	34 Deg	120	220	15	53	16	20
12	12	4.0	2.00	2.25	28 Deg	162	220	15	69	22	20
14	12	4.50	2.25	2.50	24 Deg	210	220	15	93	25	24
16	12	4.50	2.25	2.50	22 Deg	265	160	15	110	27	30
18	12	4.50	2.25	2.50	20 Deg	326	160	15	119	29	32
20	12	4.50	2.25	2.50	18 Deg	393	130	15	143	35	32
24	15	5.00	2.50	2.75	16 Deg	562	130	15	166	46	40
26	15	5.00	2.50	2.75	15 Deg	649	130	15	173	50	41
28	15	5.00	2.50	2.75	14 Deg	743	100	10	220	55	57
30	15	5.00	2.50	2.75	14 Deg	842	100	10	225	58	59
36	15	5.00	2.50	2.75	12 Deg	1179	90	10	304	99	86
42	16	5.00	2.50	3.00	10 Deg	1628	90	10	378	110	88
48	16	5.00	2.50	3.00	8 Deg	2086	90	10	449	154	88
54	16	5.00	2.50	3.00	8 Deg	2599	85	10	547	185	144
60	16	5.00	2.50	3.00	7 Deg	3209	85	10	646	215	155
72	16	5.00	2.50	3.00	6 Deg	4527	85	10	826	300	175

- 1) For concentric and eccentric reducing style, See Unisource 1201RC and 1201 RE specification pages.
- 2) For single arch, see Unisource 1201 style. For triple arch, see Unisource 1203 style. For 4-arch, see Unisource 1204 style.
- 3) See chart on opposite page for temperature ratings.
- 4) Control unit weight is based on a two-rod set up to 48" diameter, and 3-rod set for 54" diameter and larger.
- 5) For filled arch, 1202FA, movement ratings will be 50% of those listed above.
- 6) Style 1202 double arch expansion joints can be specially manufactured for 30 In. Hg vacuum if required.